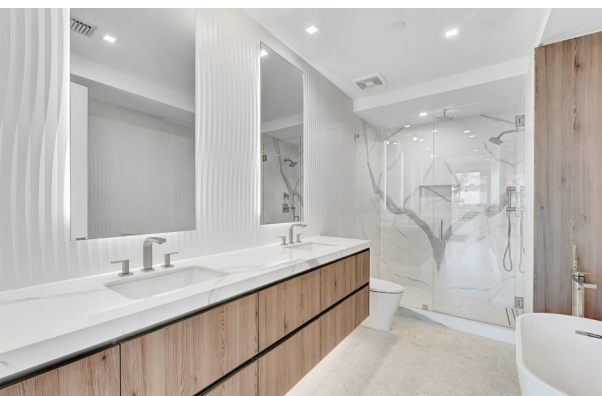


## Cornerstone Jupiter | Unit #205

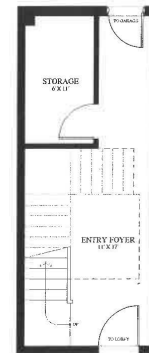


- 2,780 Total SF
- 2,255 Living SF
- Intracoastal Views
- 2 Beds + Den
- 2.5 Baths
- 2 car garage

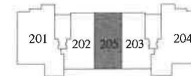




LEVEL 2 PLAN  
1915 SF



LEVEL 1 PLAN  
340 SF



**205**  
RESIDENCE  
2 BR / 2.5 BATH  
+ DEN

ENCLOSED AREA 2,255 S.F.  
TERRACE AREAS 525 S.F.  
TOTAL RESIDENCE 2,780 S.F.

ROBERT M. SWEDROE ARCHITECTS, P.L.L.C. PLANNERS AND ARCHITECTS  
1000 W. PALM BEACH BLVD., SUITE 100, PALM BEACH, FLORIDA 33480  
TEL: 561-832-1111 FAX: 561-832-1112  
WWW.RMSA.COM

**CORNERSTONE**  
ONE SOUTH COASTAL WAY  
TOWN OF JUPITER, FLORIDA



ROBERT M. SWEDROE  
ARCHITECTS  
PLANNERS  
AND ARCHITECTS  
1000 W. PALM BEACH BLVD., SUITE 100, PALM BEACH, FLORIDA 33480  
TEL: 561-832-1111 FAX: 561-832-1112  
WWW.RMSA.COM

DATE	
CHECKED	
DRAWN	
SCALE	
SHEET NO.	
TOTAL SHEETS	